



PLANET 740S

Industrial Heavy Duty Vac™ for continuous duty. Very powerful machine capable of working with large diameter suction hoses up to 70mm. Ideal for multiple users on one machine.

CLEANING MACHINES FOR UNCLASSIFIED
(GENERAL PURPOSE) AREAS
CLASS 16 1101 - 16 1181

All the electrical components are recognized or certified UL or CSA and qualifies for all applicable requirements CAN/CSA-C 22.2 No. 243 & UL STD No. 1017

- Regenerative blower for continuous duty
- Star shaped polyester main filter with manual filter shaker
- Upstream filter cartridge for fine dust
- Optional HEPA filter with minimum efficiency of 99.97% on 0.3 micron (installed in the place of the upstream filter cartridge)
- Detachable recovery tank for easy emptying
- Filter chamber and recovery tank made of stainless steel Type 304
- Sight glass installed on recovery tank
- Exhaust silencer for quiet operation

Product Details



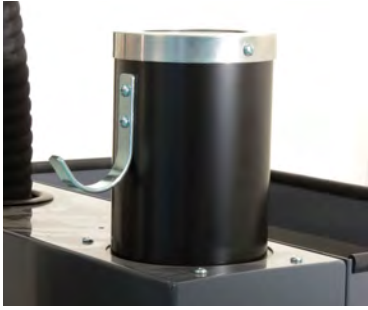
Standard filter cartridge. Optional HEPA cartridge available



Filter Blockage Indicator Gage. Manual Starter with Overload Protection.



Star Shaped Polyester Main Filter



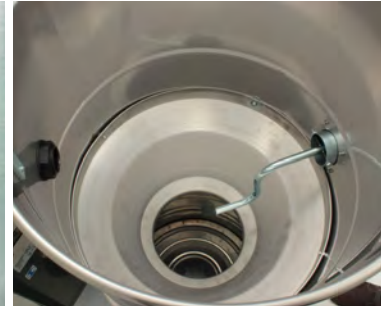
Integrated Silencer



Side Mounted Manual Filter Shaker
(external view)



Tangential Suction Inlet, 70mm,
made of Aluminum



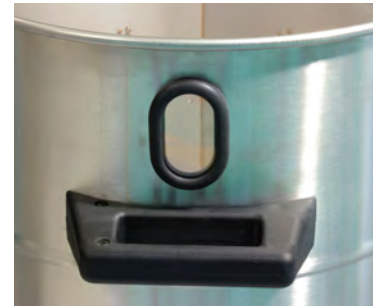
Side Mounted Manual Filter Shaker
(internal view)



Vacuum Relief Valve



Side View: Detachable Recovery Tank



Sight Glass on Recovery Tank

Technical Features	111218A1	111218A2	111218A5
Collection type	Dry (Wet Optional)	Dry (Wet Optional)	Dry (Wet Optional)
Voltage @60Hz	460V	208-230V	575V
Type of power	3-phase	3-phase	3-phase
Power	6 HP (4600 W)	6 HP (4600 W)	6 HP (4600 W)
Current (max)	n/a	n/a	7.6 amps
Airflow	240 CFM	240 CFM	240 CFM
Waterlift (inches H ₂ O)	155 in. H ₂ O	155 in. H ₂ O	155 in. H ₂ O
VRV (Vacuum Relief Valve)	110 in. H ₂ O	110 in. H ₂ O	110 in. H ₂ O
Container diameter	460 mm	460 mm	460 mm
Container material	304 Stainless steel	304 Stainless steel	304 Stainless steel
Type of filter	Star shaped + cartridge	Star shaped + cartridge	Star shaped + cartridge
Main filter area	19500 cm ² + 10000 cm ²	19500 cm ² + 10000 cm ²	19500 cm ² + 10000 cm ²
HEPA Filter	Optional	Optional	Optional
HEPA filter area (upstream)	10000 cm ²	10000 cm ²	10000 cm ²
Optional HEPA filter efficiency	99.97% on 0.3 micron	99.97% on 0.3 micron	99.97% on 0.3 micron
Machine inlet diameter	70 mm	70 mm	70 mm
Dimensions (L x W x H)	43" x 24.5" x 58" (109cm x 62cm x 147.5cm)	43" x 24.5" x 58" (109cm x 62cm x 147.5cm)	43" x 24.5" x 58" (109cm x 62cm x 147.5cm)
Weight (machine only)	305 lb. (120 kg)	305 lb. (120 kg)	305 lb. (120 kg)
Cord length	30 ft. (9m)	30 ft. (9m)	30 ft. (9m)
Sound level (@ 1m)	74 dB(a)	74 dB(a)	74 dB(a)
Container capacity	26 gal (100 L)	26 gal (100 L)	26 gal (100 L)

Specifications are subject to change without notice. The data, characteristics, colors and illustrations are merely indicative and therefore not binding



Tiger-Vac Inc. (USA)
73 S.W. 12 Ave. Bldg.1, Unit 7
Dania, FL 33004
USA

Tel: (954) 925-3625 Fax: (954) 925-3626
Web: www.heavydutyvac.net
Email: sales@tiger-vac.com

Tiger-Vac International Inc.
2020 Dagenais Blvd. Ouest
Laval, Quebec
Canada H7L 5W2

Tel: 450-625-0099 450-622-0100 (QC)
Fax: 450-625-3388