



PLANET 300S ATEX

Industrial Heavy Duty Vac™ for continuous duty suitable for use in ATEX Category 3D (Zone 22) environments. Compact design for easy maneuverability. Very powerful machine capable of working with large diameter suction hoses up to 70mm. Stainless steel Type 304 construction. Detachable recovery tank for easy emptying.

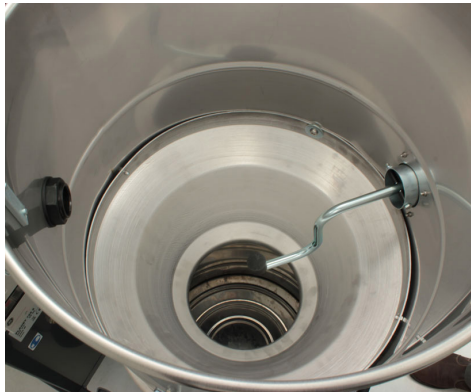
ATEX  ATEX 1st Party Certified
  II 3 D c T1250C IP55

- ATEX Compliant: suitable for use in Category 3D (Zone 22) environments
- Regenerative blower for continuous duty
- Star shaped main filter with manual filter shaker. Filter made of conductive material
- Detachable recovery tank for easy emptying
- Filter chamber and recovery tank made of stainless steel Type 304
- Compact design for easy maneuverability

Product Details



*Side Mounted Manual Filter Shaker
(external view)*



*Side Mounted Manual Filter Shaker
(internal view)*



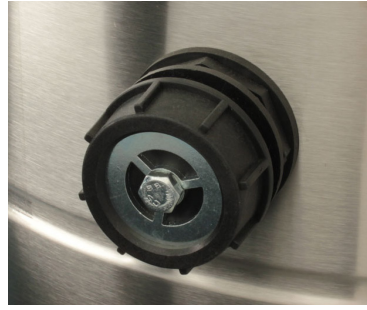
*Star shaped main filter made of
conductive material*



Tangential Suction Inlet, 70mm,
made of Aluminum



Filter Blockage Indicator Gage.



Vacuum Relief Valve



Detachable Recovery Tank

Technical Features	111225A1	111225A2
Collection type	Dry	Dry
Voltage @60Hz	460V	230V
Type of power	3-phase	3-phase
Power	4 HP (3000 W)	4 HP (3000 W)
Current (max)	n/a	n/a
Airflow	179 CFM	179 CFM
Waterlift / Vacuum	100 in. H ₂ O	100 in. H ₂ O
Container diameter	460 mm	460 mm
Container material	304 Stainless steel	304 Stainless steel
Type of filter	Star shaped	Star shaped
Main filter area	19500 cm ²	19500 cm ²
HEPA Filter	n/a	n/a
HEPA filter area (upstream)	n/a	n/a
Optional HEPA filter efficiency	n/a	n/a
Machine inlet diameter	70 mm	70 mm
Dimensions (L x W x H)	n/a	n/a
Weight (machine only)	154 lb. (70 kg)	154 lb. (70 kg)
Cord length	30 ft. (9m)	30 ft. (9m)
Sound level (@ 1m)	76 dB(a)	76 dB(a)
Container capacity	26 gal (100 L)	26 gal (100 L)

Specifications are subject to change without notice. The data, characteristics, colors and illustrations are merely indicative and therefore not binding