

## PLANET 740S ATXH

Industrial Heavy Duty Vac™ for continuous duty suitable for use in ATEX Category 3D (Zone 22) environments. Equipped with HEPA filter with 99.97% minimum efficiency on 0.3 micron. Very powerful machine capable of working with large diameter suction hoses (up to 70mm). Ideal for multiple users on one machine. Stainless steel Type 304 construction. Detachable recovery tank for easy emptying.

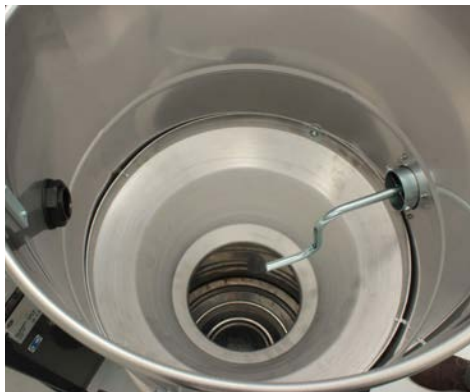
**ATEX**  ATEX 1st Party Certified  
CE   II 3 D c T1250C IP55

- ATEX Compliant: suitable for use in Category 3D (Zone 22) environments
- Regenerative blower for continuous duty
- Star shaped main filter with manual filter shaker. Filter made of conductive material
- Detachable recovery tank for easy emptying
- Filter chamber and recovery tank made of stainless steel Type 304

## Product Details



*Upstream HEPA Filter included.  
99.97% efficiency on 0.3 micron*



*Side Mounted Manual Filter Shaker (internal view)*



*Star Shaped main filter made of  
conductive material*



Tangential Suction Inlet, 70mm, made of Aluminum



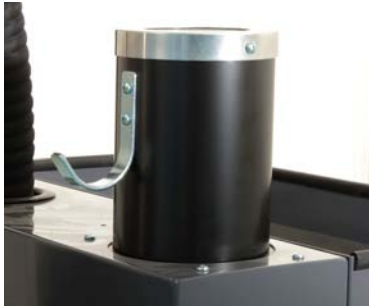
Filter Blockage Indicator Gage.



Sight Glass on Recovery Tank



Vacuum Relief Valve



Integrated Silencer.



Detachable Recovery Tank (side view)



Side Mounted Manual Filter Shaker (external view)

Technical Features	111223A1	111223A2
Collection type	Dry	Dry
Voltage @60Hz	460V	230V
Type of power	3-phase	3-phase
Power	6 HP (4600 W)	6 HP (4600 W)
Current (max)	7.9 amps	19.5 amps
Airflow	265 CFM	265 CFM
Waterlift (inches H <sub>2</sub> O)	155 in. H <sub>2</sub> O	155 in. H <sub>2</sub> O
VRV (Vacuum relief valve)	110 in. H <sub>2</sub> O	110 in. H <sub>2</sub> O
Container diameter	460 mm	460 mm
Container material	304 Stainless steel	304 Stainless steel
Type of filter	Star shaped + HEPA cartridge	Star shaped + HEPA cartridge
Main filter area	19500 cm <sup>2</sup> + 10000 cm <sup>2</sup>	19500 cm <sup>2</sup> + 10000 cm <sup>2</sup>
HEPA Filter	Included	Included
HEPA filter area (upstream)	10000 cm <sup>2</sup>	10000 cm <sup>2</sup>
Optional HEPA filter efficiency	99.97% on 0.3 micron	99.97% on 0.3 micron
Machine inlet diameter	70 mm	70 mm
Dimensions (L x W x H)	43" x 24.5" x 58" (109cm x 62cm x 147.5cm)	43" x 24.5" x 58" (109cm x 62cm x 147.5cm)
Weight (machine only)	305 lb. (120 kg)	305 lb. (120 kg)
Cord length	30 ft. (9m)	30 ft. (9m)
Sound level (@ 1m)	74 dB(a)	74 dB(a)
Container capacity	26 gal (100 L)	26 gal (100 L)

Specifications are subject to change without notice. The data, characteristics, colors and illustrations are merely indicative and therefore not binding